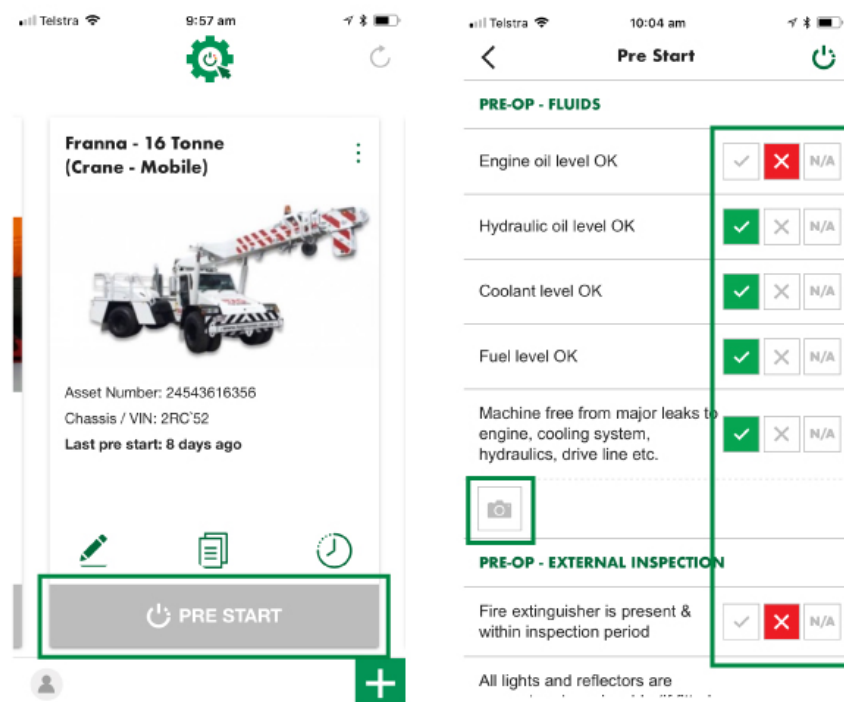


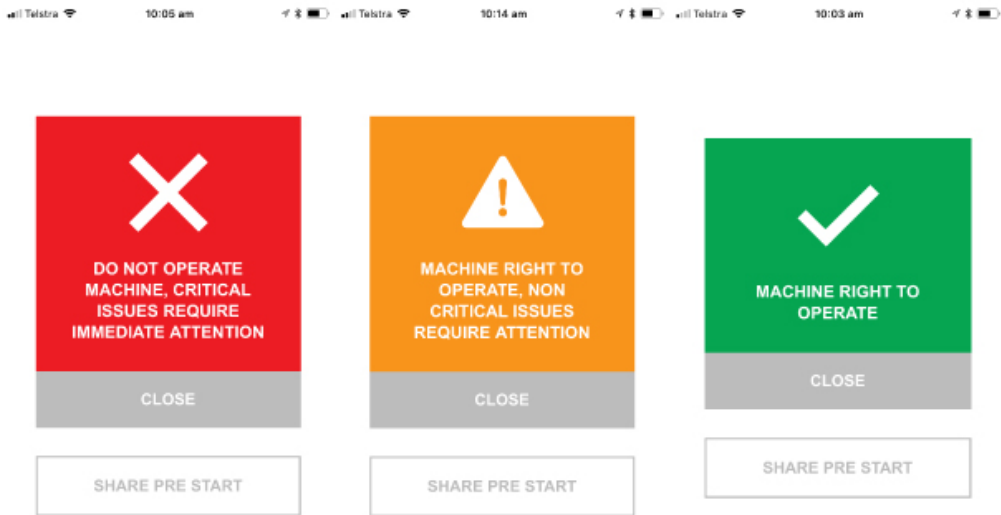
Completing a pre start check

Complete easy, daily pre start checks with immediate results.

1. Open your pre start plus app, find your machine, then click the grey **PRE START** button.



2. Answer call questions honestly by selecting **tick** (yes), **cross** (no) or **N/A** (not applicable)
3. Add a photo or comment by tapping the question
4. Once all questions are answered click **COMPLETE**
5. A status screen will appear - showing you if the machine is ok to use
 - Green tick** = machine right to operate
 - Orange hazard** = machine right to operate, non critical issues require attention
 - Red cross** = do **NOT** operate machine, critical issues require immediate attention



Click **SHARE PRE START** to send a copy of the results to coworkers or contractors - prove your machine is compliant and get on site quicker.

TIP: More than one pre start can be completed in a 24hr period - find your machine, then click on the 3 vertical dots at the top right of the machine image. Select Start **NEW** pre start.

